

ELECTRICITY IS ALL AROUND US TAKE CARE

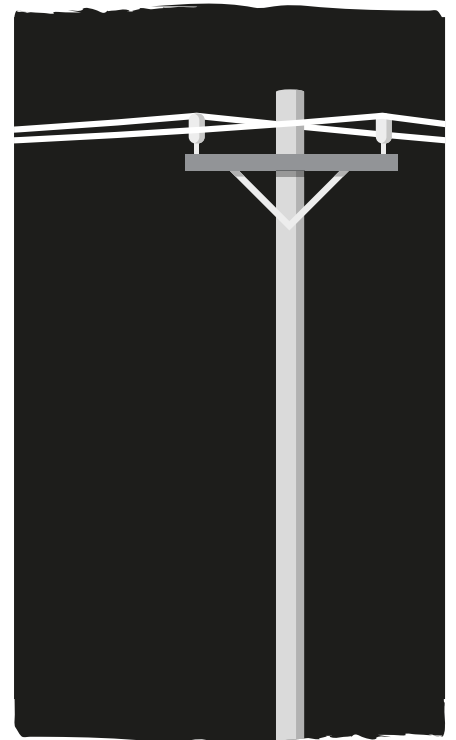
**BE AWARE OF
ELECTRICITY**

Most of us think of poles and wires when we think of how electricity is transported to us but there is much more to our electricity network. Be aware that electrical infrastructure is all around us, even if you can't see it.

OVERHEAD POWERLINES

All powerlines, whether they are low voltage, high voltage or transmission, have the potential to cause an electric shock or electrocution.

- If you notice a powerline that hangs low or has fallen to the ground, stay at least ten metres away and call us immediately on **13 23 51**.
- Never attempt to rescue anything caught in powerlines.
- Encourage children to play in an area clear of powerlines.
- If working near powerlines, contact your local Horizon Power office before starting work to ensure you maintain the minimum safe approach distances.
- Use a licensed tree trimmer to prune trees and vegetation which has grown too close to powerlines.
- If you're working at heights, always check for overhead powerlines before starting any work.
- Pay special attention to overhead electricity infrastructure when driving oversized vehicles, carrying high loads, using farming equipment or towing boats. If transporting a load higher than 4.3 metres (or 4.6 metres for livestock vehicles travelling on nominated routes), we may need to help you by moving, raising or shielding powerlines or by providing a road escort.



ELECTRICAL CABINETS

Electrical cabinets are a common sight in our neighbourhoods but we shouldn't be complacent around them. They contain different types of electrical infrastructure including transformers and equipment that enables us to isolate or connect different parts of the network.

- Never sit on or touch an electrical cabinet – they may contain live equipment.
- If you notice any damage to a cabinet, stay well clear and call us immediately on **13 23 51**.

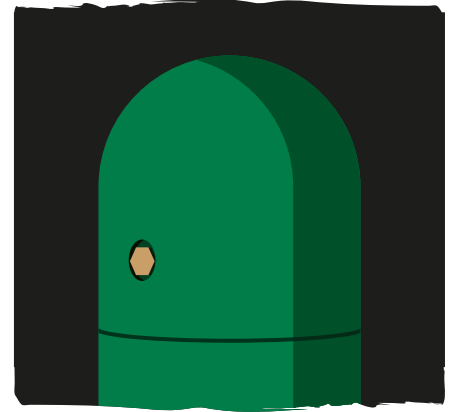


continued over

UNDERGROUND NETWORKS

More and more of our electricity is now distributed through an underground network. Powerlines are sunk beneath the ground and a mini-pillar or 'green dome' is installed just inside the property to connect homes to this network.

- Find out if there is underground infrastructure in your area by submitting an application to Dial Before You Dig, either online at www.1100.com.au or by phoning **1100**. Plan your work around the information you receive and as an extra precaution, make sure you pot hole to confirm the exact location. If you make contact with any infrastructure, stop work and call us on **13 23 51**. Wherever possible, avoid digging around mini-pillars.
- Green domes contain live wires. Never tamper with a green dome and if you see any damage, report it to us on **13 23 51**.
- Ensure we continue to have easy access to our green domes. It is important not to cover the dome, surround it with plants or a wall as we need access to carry out maintenance and emergency repairs.



SUBSTATIONS

As demand for electricity increases, so does the number of substations. Substations increase or decrease the voltage of electricity between the power station and our homes.

- Substations are always enclosed by a secured fence with warning signs clearly displayed. For your safety, stay well away. Don't ever touch or climb the fence – in rare circumstances, there is the potential for the fence to become live.
- If you notice an unlocked gate, let us know by calling **13 23 51**.



HORIZON
POWER

energy for life

Find us on    

This document is available in alternative formats on request.

Horizon Power faults
and emergencies
13 23 51

Regional offices

Karratha 9159 7288
Port Hedland 9173 8282
Kununurra 9166 4700

Police Ambulance Fire
000

Carnarvon 9941 6299
Esperance 9072 3400
Broome 9192 9900

Dial Before You Dig
1100